

Engineering Plastic Flanged Bushings / Sleeve Bearings

- PA Nylon | POM | PTFE | PEEK

- High Loading
- Self-lubrication
- Chemical Resistance
- Heat Resistance
- Low Friction
- Wear Resistance
- Good Electrical Insulation
- Applicability in the food industry (FDA)

ID	OD	LTB	F.OD	F.T
----	----	-----	------	-----

For 3/16" Dia. Shaft

3/16"	5/16"	1/4"	3/8"	3/64"
3/16"	5/16"	1/4"	7/16"	1/16"
3/16"	5/16"	1/2"	3/8"	3/64"
3/16"	5/16"	1/2"	7/16"	1/16"

For 1/4" Dia. Shaft

1/4"	3/8"	5/16"	1/2"	1/16"
1/4"	3/8"	3/8"	1/2"	1/16"
1/4"	3/8"	3/8"	9/16"	1/16"
1/4"	3/8"	1/2"	1/2"	1/16"
1/4"	3/8"	1/2"	1/2"	3/32"
1/4"	3/8"	1/2"	9/16"	1/16"

For 5/16" Dia. Shaft

5/16"	7/16"	3/8"	9/16"	3/64"
5/16"	7/16"	7/16"	9/16"	1/16"
5/16"	7/16"	1/2"	9/16"	1/16"
5/16"	1/2"	3/8"	11/16"	1/16"

For 3/8" Dia. Shaft

3/8"	1/2"	3/8"	5/8"	1/16"
3/8"	1/2"	3/8"	5/8"	1/8"
3/8"	1/2"	1/2"	5/8"	1/16"
3/8"	1/2"	1/2"	5/8"	3/32"
3/8"	1/2"	3/4"	5/8"	1/16"
3/8"	1/2"	3/4"	5/8"	1/8"
3/8"	5/8"	1/2"	7/8"	1/8"
3/8"	5/8"	3/4"	7/8"	1/8"

ID	OD	LTB	F.OD	F.T
----	----	-----	------	-----

For 7/16" Dia. Shaft

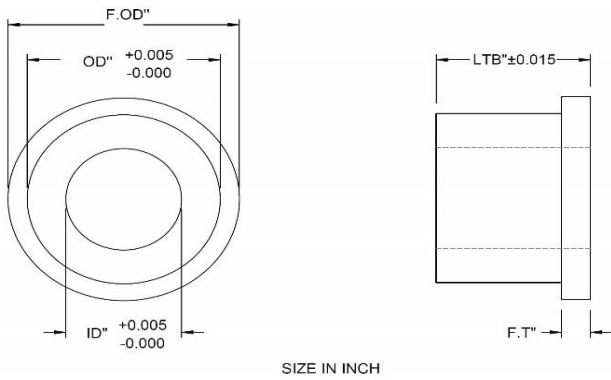
7/16"	9/16"	1/2"	11/16"	1/16"
-------	-------	------	--------	-------

For 1/2" Dia. Shaft

1/2"	5/8"	1/4"	7/8"	1/16"
1/2"	5/8"	3/8"	7/8"	1/16"
1/2"	5/8"	1/2"	3/4"	1/16"
1/2"	5/8"	1/2"	7/8"	1/16"
1/2"	5/8"	5/8"	3/4"	1/16"
1/2"	5/8"	5/8"	7/8"	3/32"
1/2"	5/8"	5/8"	7/8"	1/16"
1/2"	5/8"	3/4"	3/4"	1/16"
1/2"	5/8"	3/4"	7/8"	1/16"
1/2"	5/8"	1"	3/4"	1/16"
1/2"	5/8"	1"	3/4"	3/32"
1/2"	5/8"	1"	7/8"	1/16"
1/2"	3/4"	7/16"	7/8"	1/16"
1/2"	3/4"	1/2"	1"	1/8"
1/2"	3/4"	3/4"	7/8"	1/16"
1/2"	3/4"	1"	7/8"	1/16"
1/2"	3/4"	1"	7/8"	1/8"

For 5/8" Dia. Shaft

5/8"	3/4"	3/8"	15/16"	1/16"
5/8"	3/4"	3/4"	15/16"	1/16"
5/8"	3/4"	3/4"	15/16"	1/8"
5/8"	13/16"	5/8"	1-1/16"	5/32"
5/8"	7/8"	3/4"	1-1/16"	1/16"
5/8"	7/8"	3/4"	1-1/8"	1/8"
5/8"	7/8"	1"	1"	1/8"



Engineering Plastic Flanged Bushings / Sleeve Bearings

- PA Nylon | POM | PTFE | PEEK

- High Loading
- Self-lubrication
- Chemical Resistance
- Heat Resistance
- Low Friction
- Wear Resistance
- Good Electrical Insulation
- Applicability in the food industry (FDA)

ID	OD	LTB	F.OD	F.T
----	----	-----	------	-----

For 3/4" Dia. Shaft

3/4"	7/8"	1-1/4"	1-1/16"	1/16"
3/4"	7/8"	1-1/4"	1-1/4"	3/16"
3/4"	1"	3/4"	1-1/4"	5/32"
3/4"	1"	3/4"	1-1/4"	3/16"
3/4"	1"	1"	1-3/16"	1/16"
3/4"	1"	1"	1-3/16"	1/8"
3/4"	1"	1"	1-1/4"	5/32"

For 7/8" Dia. Shaft

7/8"	1-1/8"	1-1/8"	1-5/16"	1/16"
------	--------	--------	---------	-------

ID	OD	LTB	F.OD	F.T
----	----	-----	------	-----

For 1" Dia. Shaft

1"	1-1/4"	1"	1-7/16"	1/16"
1"	1-1/4"	1"	1-7/16"	1/8"
1"	1-1/4"	1"	1-1/2"	3/16"
1"	1-1/4"	1-1/2"	1-1/2"	1/8"
1"	1-1/4"	1-1/2"	1-1/2"	3/16"

For 1-1/4" Dia. Shaft

1-1/4"	1-1/2"	1-1/2"	1-3/4"	1/8"
--------	--------	--------	--------	------

For 1-1/2" Dia. Shaft

1-1/2"	1-3/4"	2"	2"	1/8"
--------	--------	----	----	------